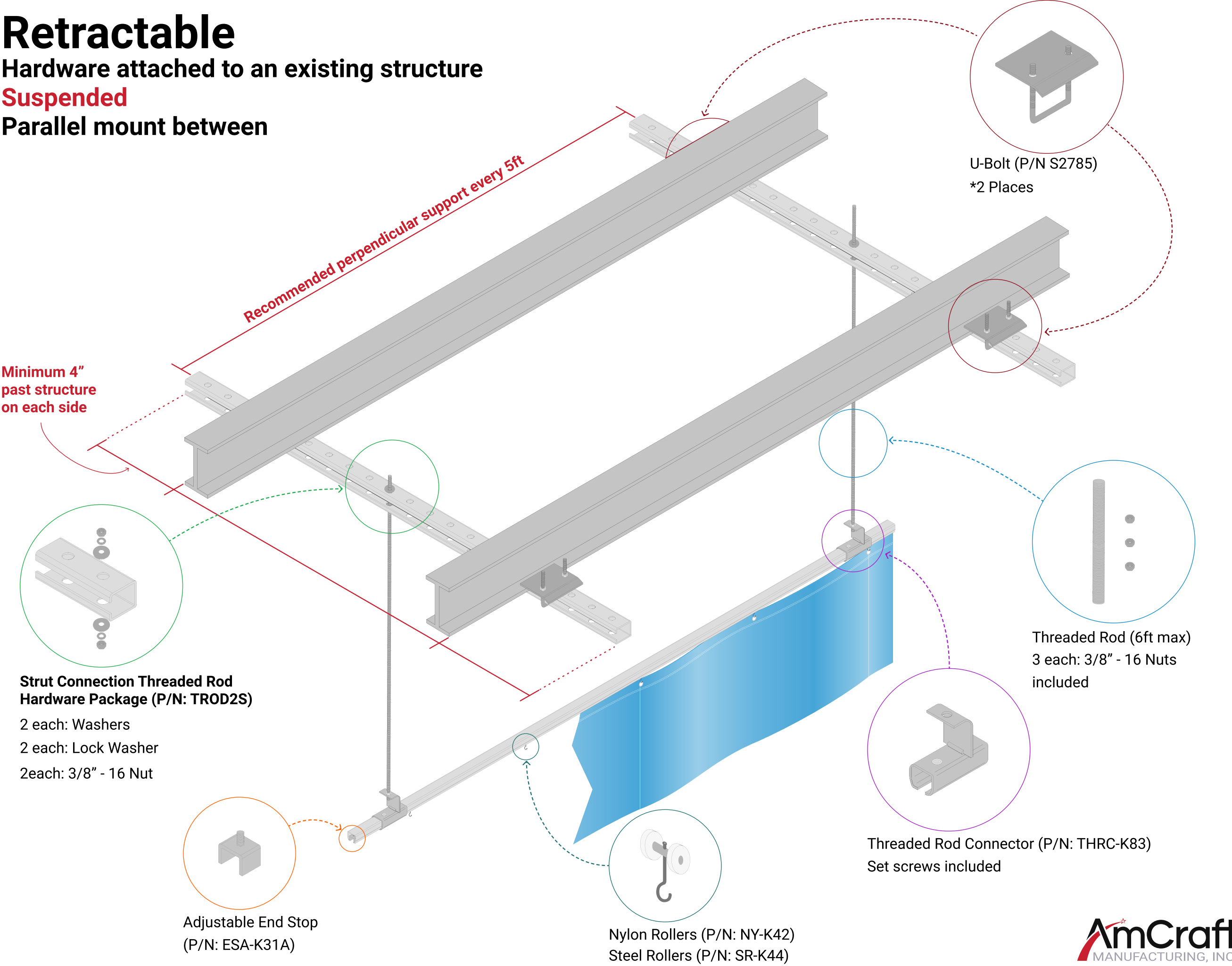


# Retractable

Hardware attached to an existing structure

Suspended

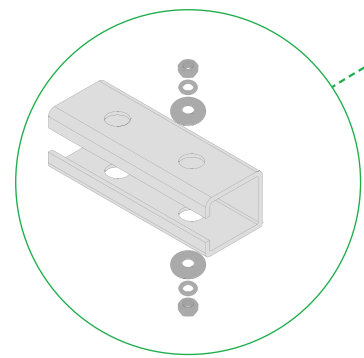
Parallel mount between



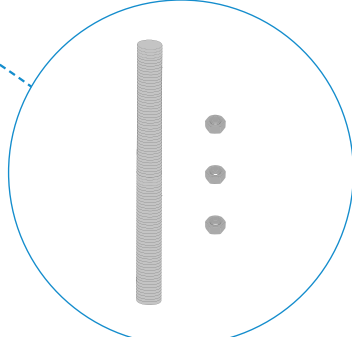
Recommended perpendicular support every 5ft

Minimum 4"  
past structure  
on each side

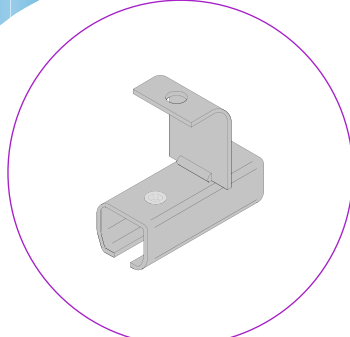
U-Bolt (P/N S2785)  
\*2 Places



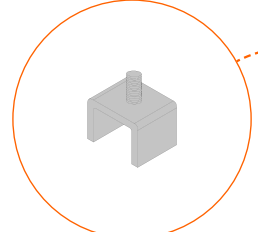
**Strut Connection Threaded Rod  
Hardware Package (P/N: TROD2S)**  
2 each: Washers  
2 each: Lock Washer  
2each: 3/8" - 16 Nut



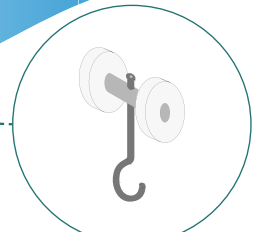
Threaded Rod (6ft max)  
3 each: 3/8" - 16 Nuts  
included



Threaded Rod Connector (P/N: THRC-K83)  
Set screws included



Adjustable End Stop  
(P/N: ESA-K31A)



Nylon Rollers (P/N: NY-K42)  
Steel Rollers (P/N: SR-K44)